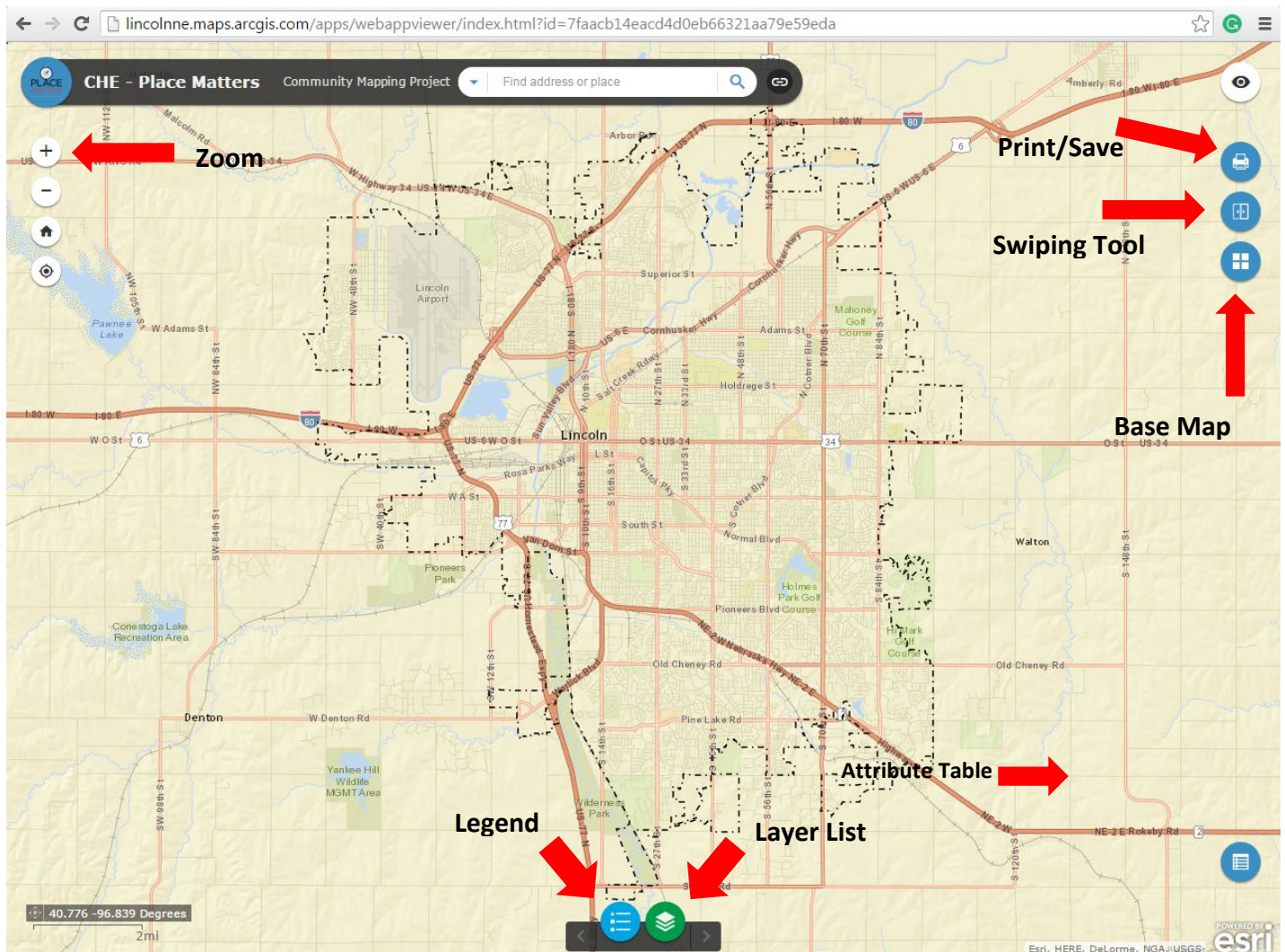




How to Use the Place Matters Online Mapping Tool

When you open the Place Matters Mapping Tool, you will be prompted to accept the terms and conditions of the Lincoln-Lancaster County Health Department.

You will then see a map that looks like the map below. If you don't see this, you may need to reset the base maps. (See instructions to do that [here](#).) To zoom in or out, use the + and - symbols in the upper left corner of the map. If you have a wheel mouse, roll the wheel forward and backward to zoom in and out.



Opening Layers

Each health factor is represented by a layer on the map. You can select and compare layers from the "Layer List." Click the green button to open and a Layer List box will pop up. You can move the Layer List to any location on your screen using the four-directional arrow that appears when you hover over the black bar at the top of the pop up box. A description of all the factors on the Layer List can be found at the end of these instructions.

On the Layer List, select or de-select a layer by clicking in the box to the left of the layer name. A white check in a blue box will appear if the layer is selected.

In addition to the layers you select, we recommend you always select the following two layers:

- Excluded Census Tracts
- City Limits 2023

Every layer you select will appear on the map. For best results, select only two or three layers simultaneously in addition to the City Limits and Excluded Census Tract layers. Please note that some maps provide census tract data, and others, such as Primary Medical Care, will show specific address locations.

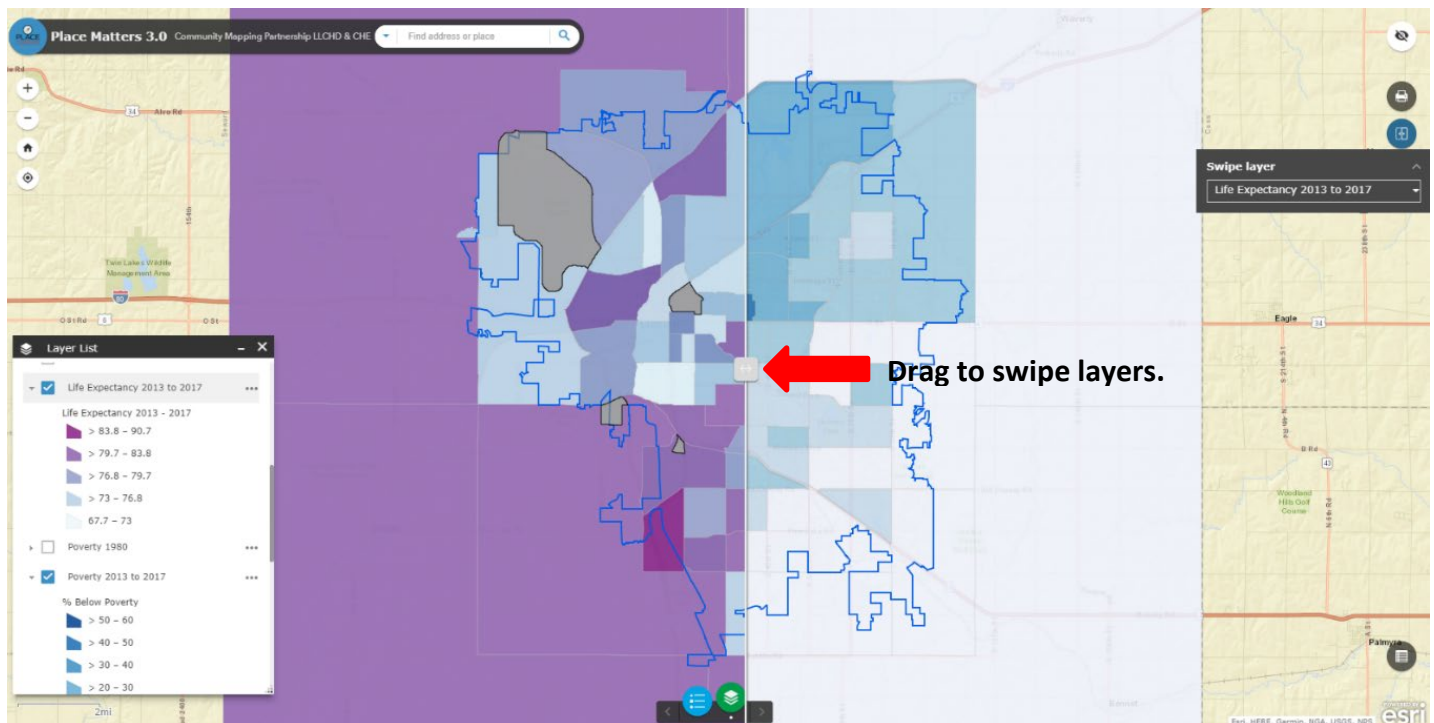
To open the color key, click on the name of the layer. A color key will appear below the layer label. Click on the layer label again to close the list. Click on the blue button at the bottom of the screen to open a separate “Legend” pop up.

Swiping Layers

To overlay and compare two layers, use the Swiping Tool.

Select your preferred layers from the Layer List. Open the Swiping Tool by clicking on the middle of the three buttons on the upper right side of the screen. Using the down arrow, select your preferred layer. This action turns off that layer. All the other layers you have selected remain visible on the screen.

Hold your cursor anywhere on the vertical white bar on the screen. The cursor will convert to a two-directional arrow. Click and hold, dragging the white bar across the screen to display the layer you chose to swipe.



For maximum effect, your preferred swiping layer should be above the other layers on the Layer List. To move items up or down on the Layer List, click on the dots to the right of the layer label and select “Move Up” or “Move Down.” You can move each item one position at a time.

To close the swiping tool, click on the swipe tool icon. This function applies to all features within this application. If you wish to exit a feature, simply select the original icon.

Changing the Base Map


The program defaults to a street map as the base map. To change the base map, select the third button on the upper right side of the screen to open a gallery of available base maps.

Printing/Saving

If you would like to save a map, click the printer icon in the upper right corner to open a Print dialogue box. Select paper size and orientation using the “Layout” drop-down menu. Choose the file type using the “Format” drop-down menu. The system defaults to pdf. Click on the “Print” button and your map will be added to a numbered list of maps within the dialogue box. Select your map, and then print or save to your computer. Once saved, use the “Clear Prints” button to delete maps before you exit.

Individual Census Tract Information

There are two ways to find information for a specific census tract.

1. Click on an individual census tract on the map. A dialogue box with specific data for that census tract (and for the layers you have selected) will pop up. Use the right and left arrows in the blue bar at the top of the box to show census tract information for each selected layer.
2. Click on the “Attribute Table” button  in the lower right corner to open a data table for each map. The layers you have selected will appear as tabs at the top of the table. (If the tabs do not appear or match the layers you have selected, you may need to refresh your browser.) Click on any factor to see the data for that layer. The census tract number will be shown in the left column of the table.

Questions?

Contact Morgan Hermanek, Operating and Communications Officer, Community Health Endowment of Lincoln, morgan.hermanek@chelincoln.org, (402) 436-5516.

Key to Layer List Labels

Adequate / Adequate Plus Prenatal Care 2021: The percentage of pregnant women who received adequate/adequate plus prenatal care (defined as care prior to the fifth month and more than 80% of the appropriate number of visits for gestational age.) *Data Source: Lancaster County Vital Records*

First Trimester Care 2017-2019: The percentage of pregnant women who received prenatal care during their first trimester. *Data Source: Lancaster County Vital Records*

Healthy Food Access 2023: The availability of healthy food options (fruits with no added sugar, vegetables with no added sauce, lean protein, low-fat dairy, and whole grains). *Data Sources: Nebraska Extension*

Life Expectancy 2017-2021: The statistically probable length of time an individual born today can be expected to live based on mortality patterns of the population in a specific census tract given the risk factors in that location. *Data Source: Lancaster County Vital Records*

Medically Underserved Areas 2023: The geographic areas and populations with a lack of access to primary care services. *Data Source: U.S. Department of Health and Human Services, Health Resources and Services Administration.*

Minority Population 2021: The percentage of people who identified as minority (not single-race White and not Hispanic). *Data Source: U.S. Census Bureau*

PACER 2022: The percentage of students grades 4-8 who passed the FitnessGram™ PACER fitness test in the 2022-2023 school year. *Data source: Lincoln Public Schools.*

PACER 2019: The percentage of students grades 4-8 who passed the FitnessGram™ PACER fitness test in the 2018-2019 school year. *Data source: Lincoln Public Schools.*

Population 75 and Over 2021: The percentage of residents who are age 75 and older. *Data Source: U.S. Census Bureau.*

Poverty 1980: The percentage of residents living in poverty (defined as 100% of the federal poverty threshold as determined by the U.S. Census Bureau). *Data source: U.S. Census Bureau.*

Poverty 2021: Five-year rolling average percentage of residents living in poverty (defined as 100% of the federal poverty threshold as determined by the U.S. Census Bureau). *Data source: U.S. Census Bureau.*

Primary Care and Internal Medicine 2023: Address locations of family and internal medicine clinics. Each clinic has one dot regardless of the number of providers in an individual medical practice. *Data Source: Lancaster County Medical Society*

Pediatrics 2023: Address locations of pediatric clinics. Each clinic has one dot regardless of the number of providers in an individual medical practice. *Data Source: Lancaster County Medical Society*

Rental Housing Burden 2021: Percentages of rental housing burden (using the current industry standard that no more than 30% of a renter's income should be used for housing costs, including utilities). *Data source: U.S. Census Bureau, Five Year Estimate.*

Social Vulnerability Index (SVI) 2020: Rankings on 14 social factors grouped into four related themes (socioeconomic status, household composition and disability, minority status and language, and housing and transportation). *Data source: Center for Disease Control/Agency for Toxic Substances and Disease Registry*